

Electric High Level Order Picker

Model : T-OPS15

Electric high level order picker provides safety and high efficiency order picking for high racked warehouse.

Max. lift height :
9000mm

AC EPS

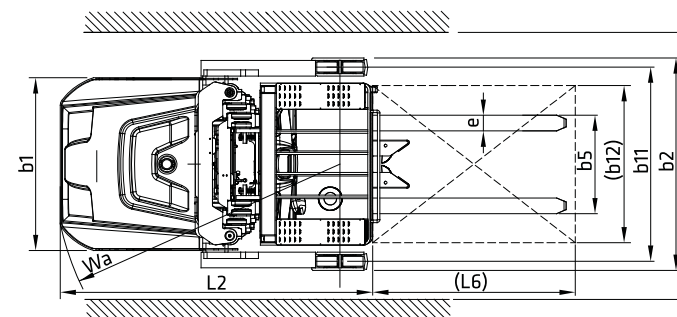
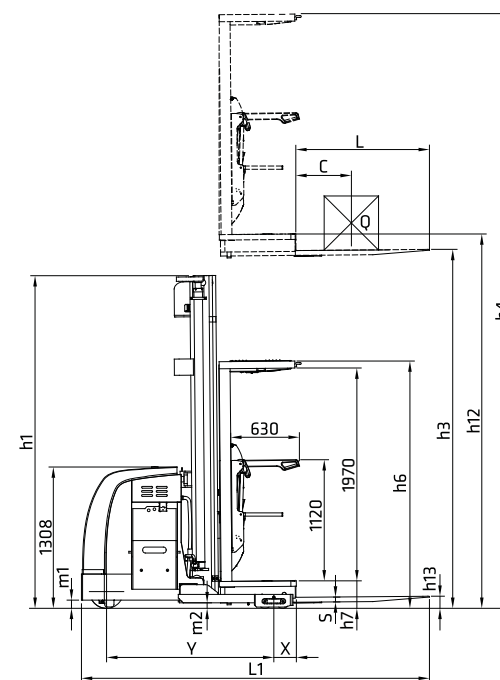
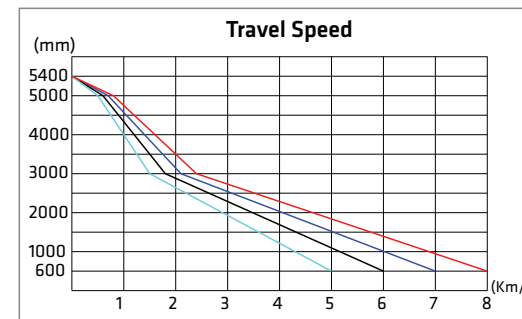
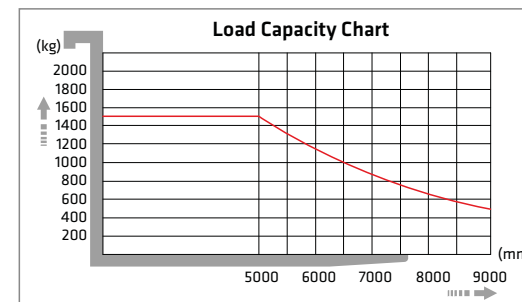


Advantages :

- Low gravity centre provides good stability.
- Advanced electric steering technology (EPS) is humanized designed, with automatic reset, height display and automatic deceleration at high lifting level.
- Finger tip control via joystick, Stepless speed control for driving, lifting and lowering speed is adjustable.
- Buffer oil cylinder: the oil cylinder will automatic decelerate when off ground 500mm, to prevent impact and lower noises.
- The mast and the frame are dividable and exchangeable.
- Low battery protection setting prolongs the battery use time.
- AC motor eliminates replacement of the carbon brush, provides good ramp starting performance and regenerative breaking functions.
- Sideway battery is convenient for exchanging and maintaining.
- The mast material is the special type imported from Germany.
- The truck can automatic decelerate when quick turning.
- High performance multi-function instrument has LED light and display function. LED indicators include battery indicator, fault indicator, Electric thermometer indicator, pedal indicator and hand break indicator.
- Multi function display, include battery status, performance, working hour, accelerator, speed, the wheel position and traveling direction.
- Press right and left keys to switch for different grades : high, normal, low, and lowest.



Conforms to EN ISO3691-1
EN1175-1
EN16307-1
Based on Directive 2006/42/EC
Conform to EN Standard 12895
Based on directive: 2014/30/EU (EMC)



1 kg = 2.205 lb 1 inch = 25.4 mm

Model	T-OPS15	
Drive type	Battery	
Load capacity / rated load	Q (kg)	1500
Load centre distance	C (mm)	600
Load distance, centre of drive axle to fork	X (mm)	206
Tyre size (front)	mm	φ 310 x 125
Tyre size (rear)	mm	φ 128 x 73
Additional wheel	mm	φ 150 x 47
Wheels, number front rear (x=driven wheels)	1x+2/4	
Height (mast lowered)	h1 (mm)	2410 / 3080 / 3750
Max. lift height	h3 (mm)	5000 / 7000 / 9000
Height (mast extended)	h4 (mm)	7230 / 9230 / 11230
Height of platform	h7 (mm)	230
Lowed height	h13 (mm)	80
Overall length	L1 (mm)	3200
Coupling height	L2 (mm)	1975
Overall width	b1/b2 (mm)	1100 / 1352
Forks length	S x E x L (mm)	45 x 100 x 1220
Width overall forks	b5 (mm)	530 / 715
Height of over head guard	h6 (mm)	2290
Aisle width for pallets 1000x1200 crossways	Ast (mm)	1400
Aisle width for pallets 800x1200 lengthways	Ast (mm)	1400
Turning radius	Wa (mm)	1800
Travel speed (laden / unladen)	km/h	7.7 / 8
Lift speed (laden / unladen)	mm/s	150 / 280
Lowering speed (laden / unladen)	mm/s	280 / 300
Battery voltage, nominal capacity K5	V / Ah	24 / 770 (1100)
Battery weight	kg	610 (850)
Battery dimensions (L x W x H)	mm	982 x 397 x 561
Service weight (with battery)	kg	3870

Option: T-OPS15 for 5-7M Lithium battery 500 Ah (Charger 24V / 200A)
T-OPS15 for 9M Lithium battery 750 Ah (Charger 24V / 200A)



Pallet Lock device



Steering and speed adjusting device



Light and fan



Tailift



DOC. S/N:DEB080 Edition: 01

No. 5, Zili 1st Road , Nankang Industrial Zone, Nantou city 540, Taiwan R.O.C.
TEL: +886-49-2263800
FAX: +886-49-2252919
Website: www.tailift.com
E-mail: insales@tailift.com.tw